



## OCTOBER EVENT

The October Little Rhody Division event is scheduled for **Saturday, October 7th** at the **United Methodist Church**, at 1558 South County Trail (Rt. 2), East Greenwich, RI 02818.

We will begin with coffee and donuts accompanied by socializing at **9:30AM**, followed by information sharing and a business meeting beginning at about **10:00AM**. We plan to wrap up by **Noon**.

Spouses and guests are always welcome.

---

### **Clinic #1: November Show Prep**

We will discuss the overall content and planning of the upcoming Train Show. We will **not** be testing T-trak modules. Volunteers will be needed on Saturday morning for a couple hours to set up tables and unload modules, etc. Volunteers will also be needed on Sunday to interact with visitors and to breakdown when we are done. Contact David Kiley () if you are able to lend a hand.

---

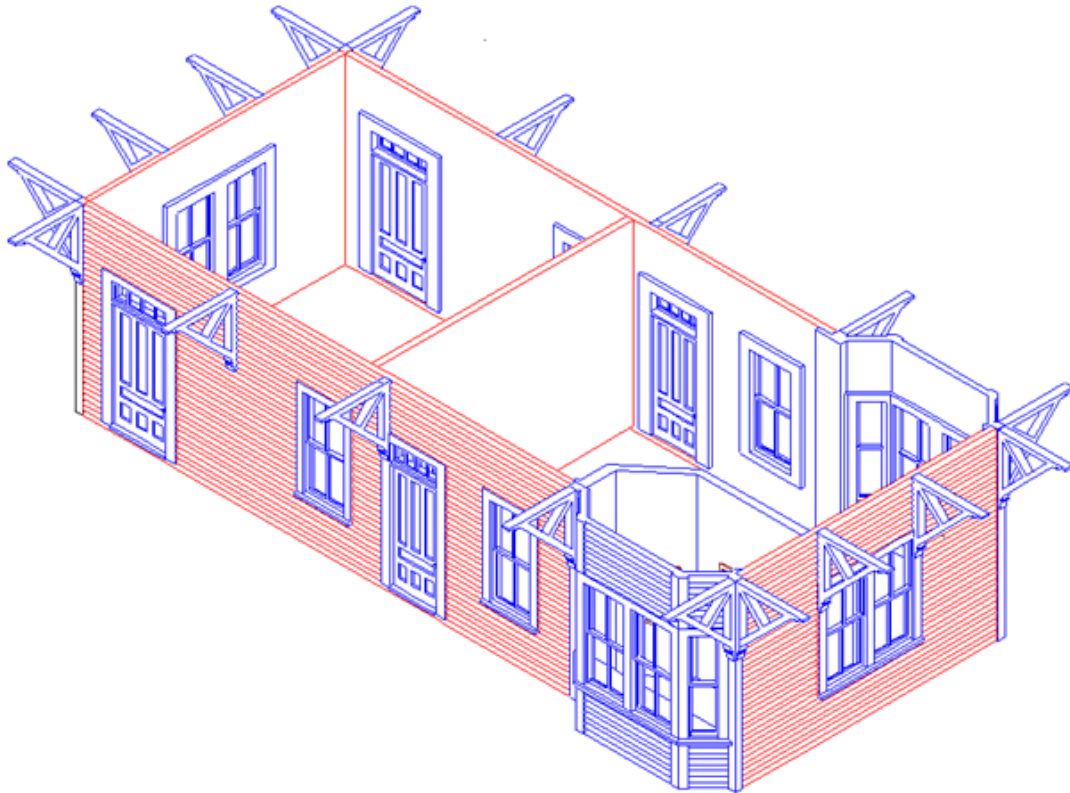
### **Clinic #2: Rick Sisson's 3-D Printing**

---

The 3D printing presentation will include:

- What is 3D printing and how you can use 3D printed components
- How to design your project for 3D printing
- 3D printing processes and materials
- Examples of models that incorporate 3D printed components

And a photo if you need one (note: the blue components are 3D printed, the red are Northeastern basswood siding):



### **Clinic #3: AP Program (ongoing series on AP Awards)**

This year we'll be doing brief introductions to each of the AP Categories, similar to what the NMRA has been running in their monthly magazine. We'll be focusing on explaining the requirements for each as well as tips on modeling and documentation for submission. For the October meeting we'll be looking at the Golden Spike award as a starting point to the eleven AP categories. We'll also be inviting members to contribute to a Project Review session. A sort of "here's what I'm working on - what do you think" or "here's something I need help with".

#### **Clinic #4: Roger Williams Park Botanical Gardens Project**

We have agreed to assist in creating a holiday train theme display for RWP. They are looking to create a partnership with Little Rhody that would extend beyond this Christmas into the following years. The committee will be presenting an update on this project whose opening day will be the Friday after Thanksgiving and continue 6 days a week during the holidays. The committee will share their progress and challenges unique to this effort. We are looking to borrow from members any Christmas Village buildings or the like.

## **FUTURE EVENTS**

### **November**

Saturday, November 4th

Train Show Setup 9 AM to 1 PM

Sunday, November 5th

Live Train Show 10 AM to 3 PM

See below for flyer

### **December**

Saturday, December 9th

Roger Williams Program Progress

Potluck East Greenwich

Open House at Providence Northern

### **January**

Saturday, January 6th

AP Program

Roger Williams Program Progress

---

*\* Contact David Kiley () or Tom Emmett () if you have any suggestions for future events, or if you would like to provide a virtual tour of your model railroad.*

## RI MODEL TRAIN EXPO

*Click on image below for printable (PDF) version.*

---



**Sunday, November 5, 2023**  
**10:00 AM - 3:00 PM**



**SCOTTISH RITE  
MASONIC CENTER**  
**2115 Broad St.**  
**Cranston, RI 02905**

**OPERATING LAYOUTS  
IN FOUR SCALES!**

**RI'S LARGEST T-TRAK LAYOUT!**  
**HARRY POTTER INTERACTIVE!**  
**SELECT VENDOR TABLES!**

**FREE PARKING!**  
**WHEELCHAIR ACCESSIBLE!**

**ADMISSION \$5.00**  
**UNDER 12 FREE!**

**SCOUTS IN UNIFORM FREE!**  
**\$20 FAMILY MAX.**

Sponsored by The Little Rhody Division of the NMRA

**SOCIAL MEDIA**

# **FACEBOOK**

## **LITTLE RHODY DIVISION "PAGE"**

Please take some time to visit the Little Rhody Division Facebook Page and newly created Little Rhody Division Group. Events will be posted to the FB Page. While there, "Like" the page so you will receive our posts.

<https://www.facebook.com/LittleRhodyDivision>

## **LITTLE RHODY MEMBERS "GROUP"**

It is my intention that this Group be used for discussions on model railroading topics between members of the Little Rhody Division and their acquaintances. As a member, you are able to share photos and other media. This is a private group and you must request to "Join" to be able to participate. Join us and start a conversation.

<https://www.facebook.com/groups/LRDGroup>

## **LITTLE RHODY T-TRAK "GROUP"**

This group was started by David Dekonski in 2016 for communications between Little Rhody members interested in T-TRAK. This, too, is a private group you must request to "Join".

[www.facebook.com/groups/1557631501142025/](http://www.facebook.com/groups/1557631501142025/)

The link to the Little Rhody Division "Page" will appear at the bottom of every newsletter. Both "Groups" may be accessed from the Page. Contact me, Linda Bergemann, if you have any questions.

---

# **YouTube**

Little Rhody Division has a YouTube channel where recordings of our monthly events are available for viewing. No new videos were added this month.

Like Facebook, the link to the Little Rhody Division YouTube "Channel" will appear

---

at the bottom of every newsletter. Contact me, Linda Bergemann, if you have any questions

## LITTLE RHODY BUSINESS

[Minutes - LRD Meeting 09 September 2023](#)

[Minutes - Annual Meeting 17 June 2023](#)

---

As always, please contact me with any questions or issues. If I don't know the answer, I will pass it to someone who can. Also, if you have any suggestions for future events, please let me know.

Stay well,  
Steve Ryder

Newsletter Composer  
Little Rhody Division NMRA



[Facebook](#)



[YouTube](#)



Website

*Copyright © 2023 Little Rhody Division NMRA, All rights reserved.*